

# EKG

We are going to build a fully-operational 3-wire EKG instrument. The three-wire connection is the simplest that will yield a usable trace (not just a heart rate). The resulting EKG will reveal all the electrical activity of the heart. A full diagnosis involves the connection of 12 electrodes across the chest and on the extremities. We will only be connecting electrodes to the arms.

<http://en.wikipedia.org/wiki/Electrocardiography>

## Disclaimer

WE ARE NOT MEDICAL DOCTORS and neither are you. Please don't attempt to interpret anything other than possibly your heart rate (beats per minute) from your EKG.

## About Safety

Medical instrumentation safety standards are regulated in the USA by the Association for Advancement of Medical Instrumentation (AAMI), American National Standards Institutes (ANSI), and Underwriters Laboratories (UL). AAMI standards have been adopted as official practice by the American Medical Association.

We are performing an AAMI Type B connection to the body, since we are potentially connecting a direct ground to the patient (you). This is considered risky because of the possibility of a ground loop if any other Type B medical instrumentation is connected that may have a different ground connection. Our ground connection is established through the 5 VDC USB power supply in your notebook computer, which may (but usually doesn't) connect to the building wiring ground via the power brick's wall plug ground prong. To fully comply with AAMI recommendations:

1. **Unplug the power brick from your notebook computer, and run the notebook on its batteries during the EKG experiment.** This converts the connection to a Type BF (fully floating) connection.
2. Don't connect yourself to any other AC-powered instrumentation while you are doing this experiment. Do not connect yourself to ground by holding onto an earth connection such as a water fixture.

While it would be extremely unlikely for a failure to occur whereby you could be injured by the electrical connection through the computer's USB, please unplug your laptop to comply with the AAMI regulations.

## About Privacy

If you are AT ALL concerned about submitting your personal EKG with your lab report, YOU DO NOT HAVE TO DO SO. The EKG plot could be construed as medical information protected under Federal HIPAA privacy laws, i.e.,

<http://www.hhs.gov/ocr/privacy/hipaa/understanding/index.html>.

You may borrow one of the instructors who will serve as your patient if you wish.

## Part 1: RC Filters

The EKG can be quite sensitive to noise. The quality of the result without any filtering can depend quite sensitively on the electrical environment you are conducting your experiment in. The most prominent source of noise for us is 60 Hz from the AC power. While you may be able to see your heart rate without any filtering, cleaning up the signal will show the features that are important to a doctor who would read your test results. In the first part of this lab you will explore some filters in isolation then we will apply similar filters to the EKG circuit.

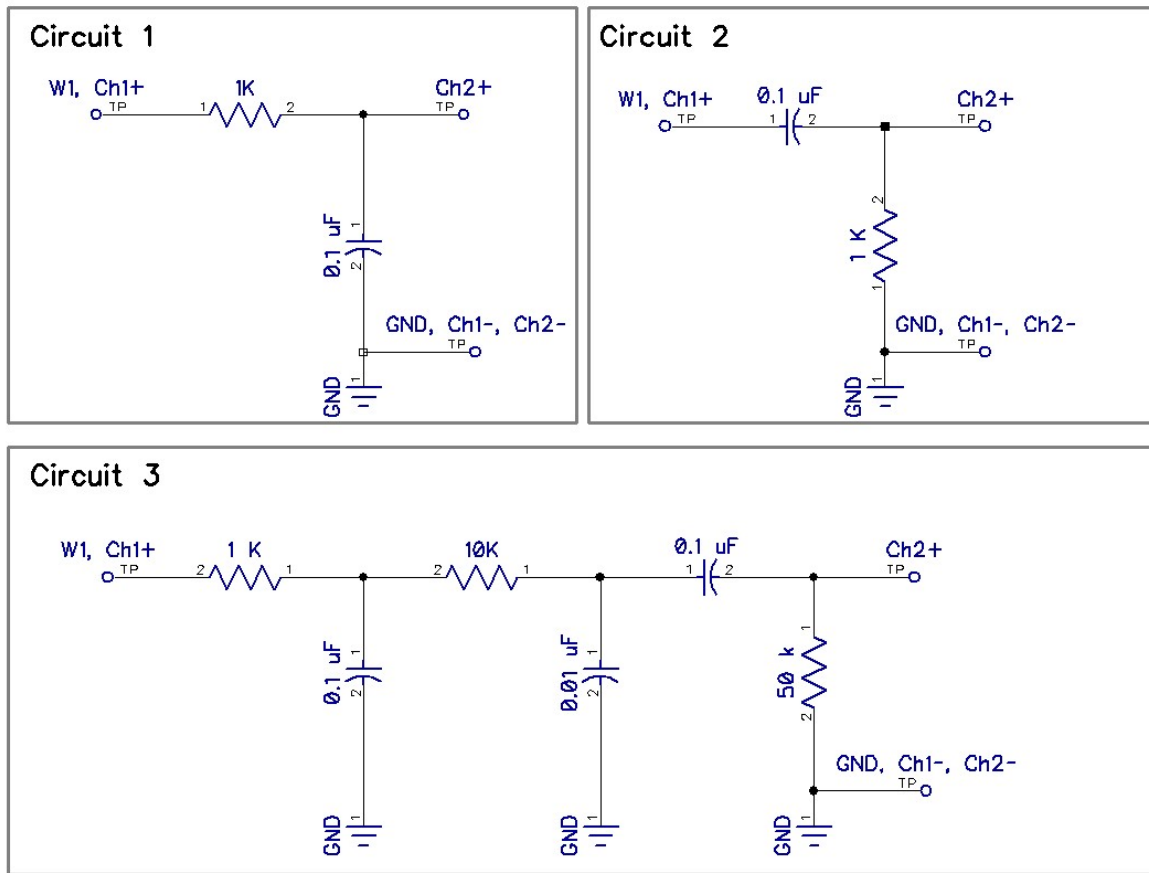


Figure 1: Three different RC filters.

You will create three circuits, a low-pass filter, a high pass filter, and a set of three connected filters. These three circuits are shown in Figure 1. Construct and test the behavior of each circuit, independently, in turn. Connect the W1 (waveform output 1, solid yellow wire) from the Analog Discovery to the input of the filter. Use the Scope's channel 1 to measure the input to the circuit, and use the channel 2 to measure the output. Turn on the "WaveGen" arbitrary waveform generator as in last week's lab. In the arbitrary waveform generator, make the output signal a sine wave, with an offset of 0 volts and amplitude of 1 volt. Turn on the scope and turn on the two measurement channels so you can see both the filter's input and output signals. Adjust the time scale, voltage scale, and trigger so you can easily observe the output signal relative to the

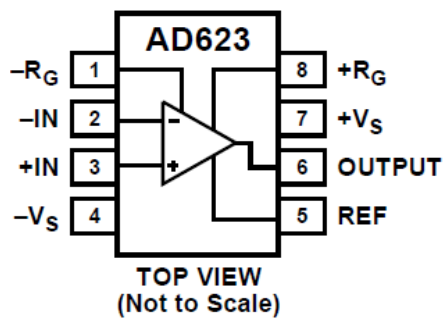
input. Adjust the frequency of the waveform to be lower, higher, and around the characteristic frequency of the filter given by the RC time (don't forget to convert rad/s to Hz). Observe how the filter behaves at both low and high frequencies. Pay close attention to the qualitative behavior as a function of frequency. Watch the amplitude of the output as well as the phase between input and output.

Once you have some feel for how the filter is operating qualitatively, go to the main screen for the Analog Discovery. Click on "other instruments" and then "network analyzer". The network analyzer will automatically create a Bode plot for you. Adjust the frequency range, 10 Hz to 100 kHz is a good place to start, though you may want to adjust this range. Click "single" to conduct a single frequency sweep. **Save the Bode plot data through the export feature for each circuit.**

## Part 2: The EKG

The EKG circuit is really quite simple. We will make use of the same instrumentation amplifier chip you used in the strain gauge lab, the AD623 by Analog Devices. The connection diagram is shown below:

### CONNECTION DIAGRAM



As you have seen, the chip is very easy to use. You simply place a resistor between pins 1 and 8 to set the gain of the amplifier. If you look through the data sheet you will find that the gain resistor,  $R_G$ , is related to the amplifier gain  $G$ , by  $R_G = 100 \text{ k}\Omega / (G - 1)$ . The chip provides an output which is simply,  $V_{out} = V_{ref} + G(V_{in+} - V_{in-})$ . Pin 5, the reference, is the output voltage when there is no difference at the inputs. We will set the reference voltage to 2.5. This way, we get 2.5 volts when the inputs are equal and have room with the 0-5 V power to have the voltage difference of the inputs to be positive or negative. If we used the ground as the reference, then we would only be able to see anything when the positive input was greater than the negative one.

The entire schematic is shown below. Following the amplifier are two low-pass filters and one high pass filter. This filter is the same topology as earlier in this lab, only we are using larger capacitors to adjust the time constant. We used a higher frequency earlier in the lab as those frequencies are compatible with the Analog Discovery "Network Analyzer". For the EKG we need to isolate the approximately 1 Hz signal.

## Testing the EKG

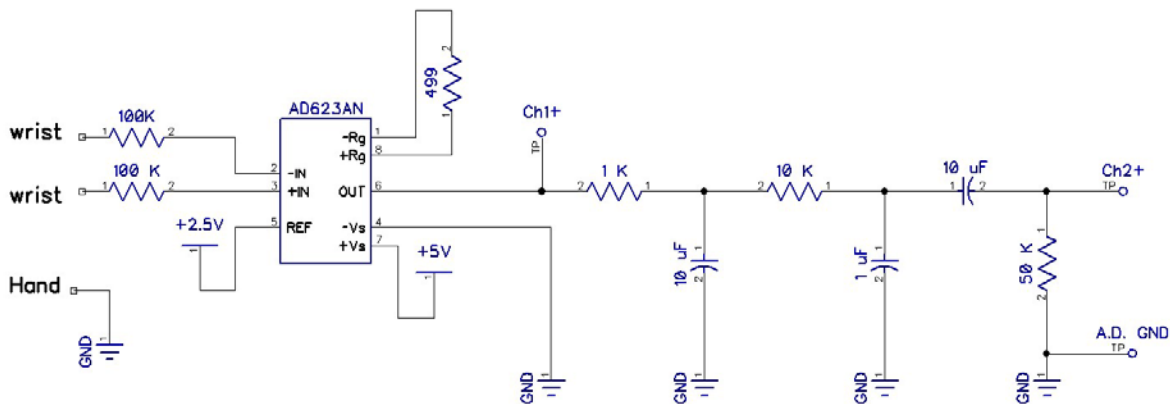
To connect to the circuit you will need a patient (yourself if you would like, or one of the course instructors), three of the adhesive electrode pads, and three alligator clip leads. Two of the pads should be placed on the inside of the wrist. The third ground electrode can be on the back of your hand. The alligator clip leads will

connect to the metal tab on the electrodes. The other end can grab a set of header pins to connect to your breadboard. Your ground electrode on the back of your hand should connect directly to the ground on the breadboard. The wrists should connect to the AD623 through the 100K resistor. The 100 K resistor is for safety to isolate you from the power sources. This extra resistor is to comply with medical electronics standards; the risk of shock through the computers USB power supply is exceedingly low (i.e. maybe if lightning strikes while you are attached?).

Measure the output of the circuit after the amplifier and after the filters, just to compare the signal quality.

NOTE: all patients are different in signal strength. If your trace is too small in amplitude, you can try adding a second instrumentation amplifier after the filters. Try adding an additional gain of 10 or 100. It is generally not a good idea to increase the gain of the first amplifier as it is easy to completely saturate the signal before the high-pass filter.

**For your lab writeup you need to include a snapshot of a clean EKG** (you should not identify the “patient” in your lab report), so be sure to save some data before you close down for the day. You will also include a photo of your working circuit on the breadboard.



## Deliverables

You should have three experimental bode plots from the three circuits in Figure 1. The data from the experimental Bode plots should be compared (i.e. overlaid on the same plot) to the predicted behavior which we derived in lecture (see notes on the course website). For the circuit with three filters, you can assume that the three filters which make this circuit are independent and that the resulting response is just the simple combination. The reality is that there is some coupling, but this was made weak by making the resistors larger as we proceed down the chain. Provide some interpretation of your Bode plot. Denote the characteristic cutoff frequencies for your filters on your plots. Careful with units of Hz and rad/s.

You should include a clean EKG trace.

Finally, include a picture of your beautiful, clean circuit with no long loopy wires.